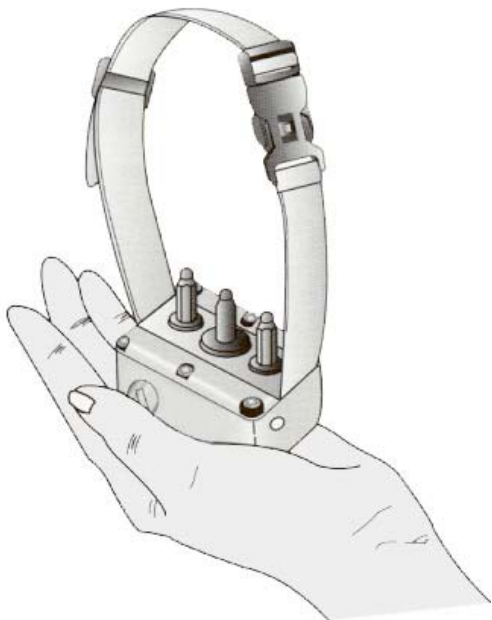


# **1145DT**

## **NO BARK TRAINER™**

INSTRUCTION MANUAL



**D.T. SYSTEMS, INC.**

# TABLE OF CONTENTS

• Introduction .....	3
• Features .....	4
• Package Contents .....	4
• Parts & Functions .....	5
• Choosing the Correct Electrodes and Sensors .....	6
• Adjusting and Positioning Your Collar .....	7
• Operation .....	8
• Changing the Battery .....	9
• Testing .....	10
• Maintenance .....	10
• Important Safety Notes .....	11
• Warranty .....	11
• Contact Information .....	12

## **INTRODUCTION**

**Congratulations and Thank you for purchasing the 1145DT No Bark Training System. This collar is one of the best and most advanced No Bark Trainers in the World.**

---

The 1145DT has been specially designed for training your dog and for preventing excessive barking by automatically sending out an electrical stimulation whenever problem barking occurs. This training system is ideal for all dog temperaments from the most stubborn to the meekest.

**The 1145DT is perfect for:**

- Preventing excessive barking at home, in a kennel or while traveling.
- Preventing your dog from howling at night.
- Preventing your dog from barking in restricted areas.

**IMPORTANT**

It is recommended that you fully read and understand this entire owner's manual prior to operating your 1145DT No Bark Trainer. If you have any questions or do not fully understand any part of this manual, or the product's features or operation please contact our customer service department at the phone number or address on the back of this manual.

## FEATURES

### The newly redesigned 1145DT No Bark Training System features:

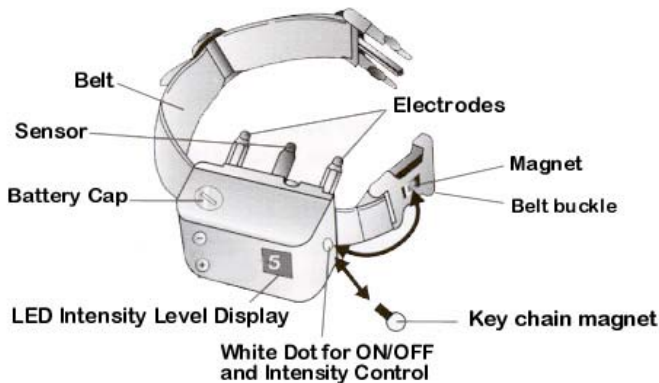
---

- Completely Digital Micro-processor System.
- Adjustable Collar fits small to large dogs.
- Replaceable 6 Volt Battery
- System delivers 1/2 second corrective stimulation.
- Automatic three-second safety delay.
- Built in Magnetic ON/OFF system.
- Magnet built right into the collar clip. (No more lost magnets)
- Digital Numeric Display shows 8 different intensity levels.
- Vibration Sensor only picks up vocal cord vibrations eliminating unnecessary “shock” from extraneous noises or dog’s tags.
- Data Memory System saves last used intensity setting.
- Completely Waterproof.

## PACKAGE CONTENTS

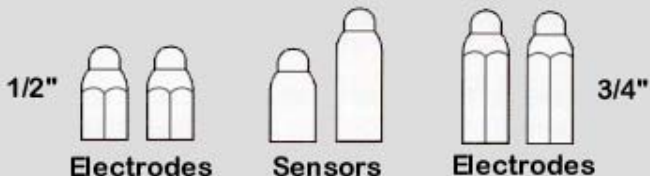
1145DT No Bark Collar - Size: 2.3” X 1.6” X 1.1”      Weight: 4 oz.  
1/2” Electrodes & 1/2” Sensor  
3/4” Electrodes & 3/4” Sensor  
Key-Ring Magnet                      Test Light  
(Battery Not Included)

## PARTS & FUNCTIONS



- The collar belt is adjustable from approximately 7” to approximately 21”.
- The round circle on the clip with D.T.S. imprinted on it is a magnet for turning the unit ON/OFF and changing intensity levels. (You can also use the key ring magnet.)
- The White dot on the collar box is where you hold one of the magnets to turn the unit ON/OFF and change intensity levels.
- The display shows an LED number to indicate the current intensity level and also has a small blinking light to let you know the unit is ON.
- The Sensor is vibration sensitive and is designed to not be activated by extraneous noises (including rattling dog tags or other dogs barking).
- The unit starts on intensity level Zero and cycles through intensity level Eight then back to Zero.

## CHOOSING THE CORRECT ELECTRODES AND SENSORS



Choosing the proper electrode and sensor length is vital to the proper operation of the unit.

Electrodes and sensors should be long enough to make good contact with the dog's skin without being so long as to interfere with the dog's normal breathing.

\*\*\*Tip: With some longer haired dogs it can be beneficial to trim the hair around the area of the voice box.\*\*\*

### **CAUTION**

When screwing in the electrodes and sensor, tighten by hand only. Proper hand tightening will allow the electrodes and sensor to vibrate for maximum stimulation. Over tightening can cause damage to the unit.

## ADJUSTING & POSITIONING YOUR COLLAR FOR PROPER FIT

Proper collar tightness and position are very important to insure safety and correct functioning every time you use the collar.

- All electronic collars need to be very snug to work properly. They must be just tight enough to allow the electrodes and the sensor to make good skin contact.
- If your collar is too loose, the stimulation may not work properly because good skin contact is not being achieved. This can directly affect the stimulation performance and whether or not the dog will receive the stimulation. Always check for good contact if it appears that your dog is not responding to the stimulation.
- A loose collar can promote skin irritation from moving or rubbing too much on a dog's neck while they are running or training. The proper snug fit will help prevent this from occurring.
- Proper fit of the collar is extremely important. It should be just tight enough on the dog's neck to make good skin contact while still allowing the dog to breath normally. The collar should never be so tight that it restricts the dog's normal breathing pattern.
- For proper positioning of your collar receiver box, it should be placed so that the electrodes and sensor are facing the dog's vocal cords.
- Check your dog's neck daily for signs of possible irritation.

# **OPERATING THE 1145DT**

## **Turning the 1145DT ON & OFF:**

### **Turning the Unit ON:**

- Touch either magnet to the White Dot on the side of the 1145DT collar box for approximately one half second until the number 0 flashes briefly on the LED Display.
- The number 0 will be followed immediately by another number (0-8) which will flash for approximately 1.5 seconds. This indicates on which intensity level the unit is currently set.
- The small sub LED light on the display will blink steadily every 2.5 seconds to let you know the unit is ON and functioning properly.

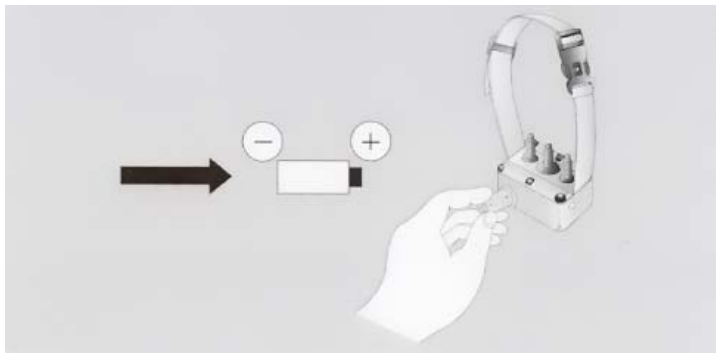
### **Turning the Unit OFF:**

- Touch either magnet to the white dot for 2 seconds. The number 0 will quickly blink twice on the display. This indicates the unit is now off.

## **Changing the Stimulation Level**

While the unit is on quickly touch either magnet to the White Dot (less than one second). Each time a magnet touches the White Dot the stimulation level will increase by one level. The level will flash in the display for 1/2 second. When the level reaches 8 the next touch will reset the unit back to 0.

## CHANGING THE BATTERY



### **NOTE**

Use only 6 Volt Alkaline or Lithium Battery.  
(Lithium will last longer)

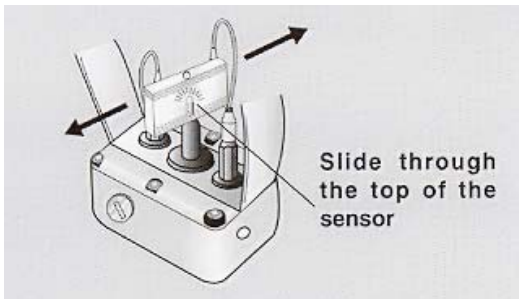
### **Follow these steps to change the battery on the 1145DT:**

- 1) Use a coin or screw driver to open the battery compartment cap by turning it counter-clockwise.
- 2) Remove the old battery.
- 3) Insert the new battery positive “+” side first into the battery compartment.
- 4) Close the battery cap in a clockwise direction.

### **CAUTION**

Make sure to check that the cap is properly closed and tightened to prevent water leakage.

## TESTING



1. Place the two red wires from the Test Light onto the electrodes (as shown in the picture above).
2. Turn the unit ON using either magnet.
3. Slide the bottom of the test light (the serrated edge) across the top of the sensor.
4. If the light comes on, the unit is functioning properly.
  - Higher intensity levels will cause the Tester to light up brighter.
  - If the tester doesn't light, wait 3 seconds then repeat the process.

## MAINTENANCE

- It is very important to periodically clean your 1145DT No Bark trainer for maximum performance. Regular cleaning will also lengthen the life of your unit.
- Clean the 1145DT collar box with lukewarm water and a mild anti-bacterial soap.
- Take care to thoroughly clean the space between the electrodes and the belt.
- The belt and buckle should be cleaned with water and a mild soap then allowed to dry completely.
- Always allow the entire unit to completely dry before using. Never completely submerge the unit.

## IMPORTANT SAFETY NOTES

- Before beginning bark training your dog should be examined by a veterinarian to assure that there are no physical reasons for your dog's excessive barking and to assure that your dog is in good health.
- Since no electronic device is perfect, there is an extremely slim possibility that your dog may receive an unintentional electric stimulation. Therefore never leave the unit on your dog while unsupervised.
- Your 1145DT No Bark Trainer is a very valuable tool if used correctly. Therefore it is extremely important that you completely understand all functions of the collar and how to properly train with it before placing it on your dog.
- The electrodes on this collar are made with high grade stainless steel to help prevent any chemical or allergic reactions with your dog's skin.
- To prevent neck irritation, the collar should never be worn for more than 12 hours a day. Daily changing the collar location on the dog's neck will also help prevent irritations. It is important to keep the collar clean. Clean the electrodes regularly with a mild anti-bacterial soap.
- If an irritation is found, carefully wash the dog's neck with soap and water and then wipe the area with Hydrogen peroxide. Dry thoroughly and apply an antibiotic ointment.

## WARRANTY

All **1145DT** No Bark Trainers have a Six Month Parts and Labor Warranty, effective from the original date of purchase. (A copy of the original sales receipt is required to validate the date of purchase).

### NOTE

**1145DT** batteries are replaceable/disposable and are not covered under the warranty.

Damage by user, abuse or loss of parts, and attempted repair damage by the user or his agent are not covered. All repairs, whether warranted or not, should be sent to the address on the last page of this manual.



**D.T. SYSTEMS, INC.**

2872 Walnut Hill Lane

Dallas, Texas 75229

Tel: (214) 350-9446

Fax: (214) 350-7847

[www.dtsystems.com](http://www.dtsystems.com)

[customerservice@dtsystems.com](mailto:customerservice@dtsystems.com)